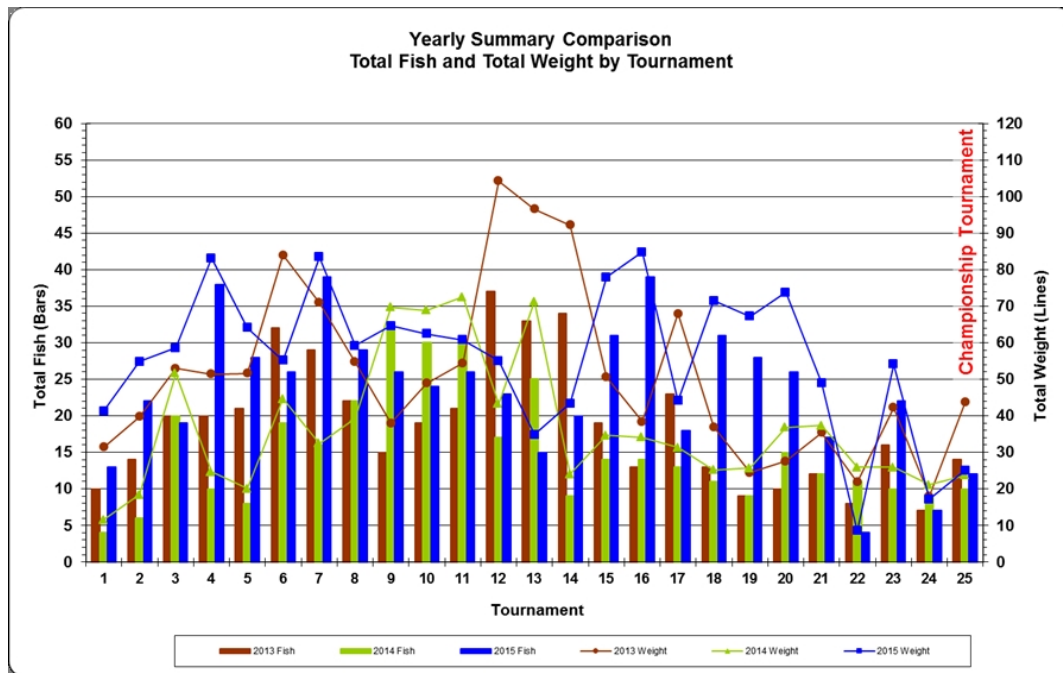
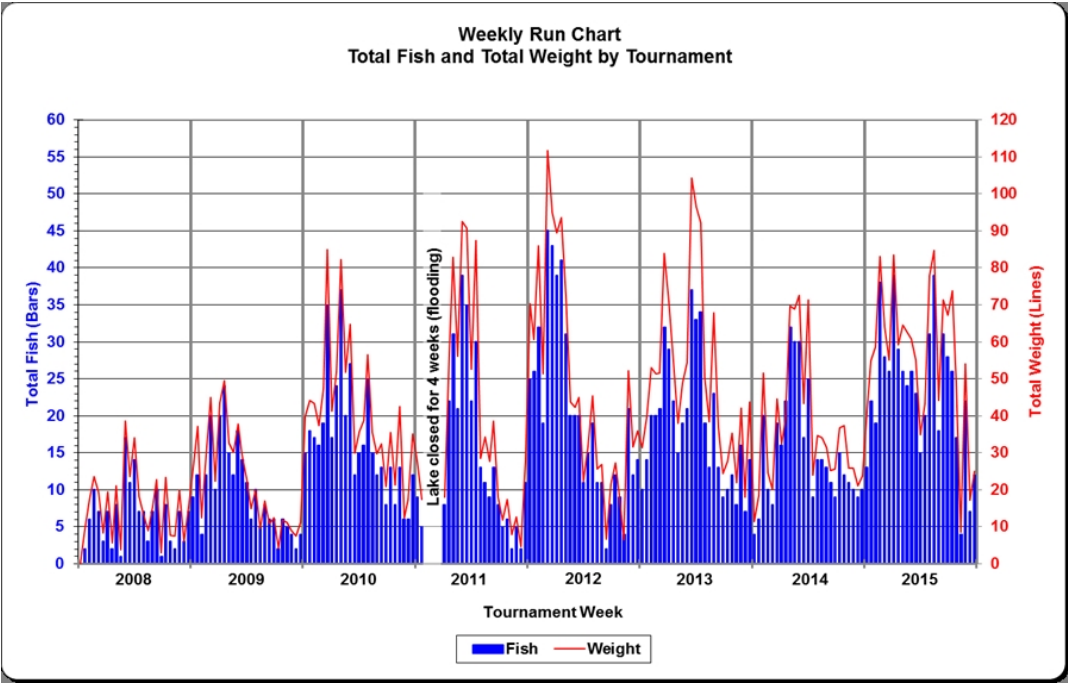


If you are interested in data summarizing the weekly tournament results, check out the following article.

Below is a chart comparing the current year results against previous years for total fish weighed-in and total weight by tournament week. Let me explain what the chart is showing as it has a lot of information packed into a small area. The chart is organized as a series of color coded bars and lines, similar to the Yearly Summary graphs generated at the end of each season. The total number of fish weighed-in for a given week is plotted as a bar and relates to the y-axis scale on the left. The total weight for a given week is plotted as a line and relates to the y-axis scale on the right. A bar and line is plotted with the same color for a given year as indicated in the legend.



[Click to enlarge.](#)



[Click to enlarge.](#)